

# MONTGOMERY MEADOWS HOMEOWNERS ASSOCIATION INC.

## EXTERIOR COLOR SPECIFICATION AND ENTRYWAY, STORM, AND SCREEN DOOR DESIGN

Policy Resolution: 2014-1

Adopted: 9-11-14

WHEREAS, the addendum to the Architectural Control Regulations dated September 14, 2006 entitled "Entryway Door" of the Montgomery Meadows Homeowners Association, Inc. establishes guidelines on the color and style of entryway doors, style/design of Storm, Screen and Security Doors;

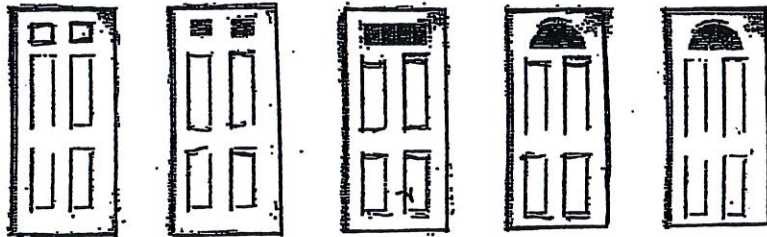
WHEREAS, there is a need to update and amend this resolution and further define and clarify the allowed exterior colors and styles of allowable entryway, storm, screen and security doors; and

WHEREAS, Article VII of the Bylaws provides that the business and affairs of the Association shall be managed by the Board of Directors ("Board"); and

WHEREAS, Article V, Section 2 of the Declaration of Covenants, Conditions, and Restrictions provides that the Board, acting in its capacity as the Architectural Control Committee "may from time to time adopt and promulgate such rules and regulations regarding the form and content of plans and specifications to be submitted for approval and may publish such statements of policy, standards, guidelines and/or establish such criteria relative to architectural styles or details, or other matters, as it may consider necessary or appropriate."

Now THEREFORE, be it resolved the Addendum to Architectural Control Regulations dated September 14, 2006 entitled "Entryway Doors" is dissolved and any reference to exterior color (including trim, bay window roof, door, and shutter) and or entryway, storm, screen or security style within the Architectural Control Guidelines is amended. This policy resolution and rules are adopted for the exterior colors, style and/or design or Entryway, storm, and screen doors in Montgomery Meadows Homeowners Association community and be adopted as follows:

1. Entryway Doors – Style/Design. The following entryway door styles are approvable.



2. Exterior Colors – the Behr Colonial color palette with the following eight (8) combinations are approvable upon submission of an Architectural Change Request.

Door and Shutters must be matching using #3 of the chosen color palette combination.  
Bay Roof must be the #2

The Bay bottom must be #1

You can not mix and match different items from different selections. Must use entire 3 color palette selection. The Sheen should be "Satin Enamel"

The following pallets are the approved combinations:

- A) #1 Ultra Pure White #2 Jet Black ECC-10-2D #3 Holly Berry ECC-10-3D
- B) #1 Daybreak Sun ECC-11-1U #2 Daisy Field ECC-11-2U #3 Whispering Oaks ECC-11-3D
- C) #1 Hiking Trail ECC-51-1D #2 Sand Castle ECC-51-2U #3 Hidden Forest ECC-51-3D
- D) #1 Sonoran Sands ECC-43-1U #2 Bridle Path ECC-43-2M #3 Chaparral ECC-43-3D
- E) #1 Fair Winds ECC-1-1U #2 Willow Wood ECC-41-2D #3 Laurel Oak ECC-41-3D
- F) #1 Floral Bluff ECC-16-1U #2 Bright Moon ECC-16-2U #3 Inlet Harbor ECC-16-3D
- G) #1 Autumn Sage ECC-63-1D #2 Aspen Snow ECC-63-2U #3 Homeland ECC-63-3D
- H) #1 Jungle Khaki ECC-64-1M #2 Moonstruck ECC-64-2U #3 Desert Night ECC-64-3D

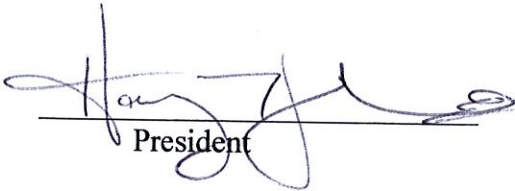
- 3. Storm Doors – All styles will be considered upon application submission but approval is necessary
- 4. Screen Doors – Will be considered upon application submission but approval is necessary
- 5. Security Doors – Not approved


#### Adoption of Exterior Colors and Entryway, Storm, Screen and Security Doors

The guidelines contained herein are adopted as a part of the Architectural Control Guidelines. In witness whereof, we being the Board of Directors of said Association have hereunto adopted these regulations.

Attest

9/11/14  
Date

  
President

  
Vice President

# YOUR HOME IS UNIQUE

When choosing colors for your home, it's important to consider areas that are already finished and can't be readily changed. These palettes offer suggestions for working with existing brick, stone, roof and other permanent features of your home.



1 Body: Fair Winds ECC-41-1<sup>®</sup>  
2 Trim: Willow Wood ECC-41-2<sup>®</sup>



Trim: ULTRA PURE WHITE<sup>®</sup>

**A**

1 Body: ULTRA PURE WHITE<sup>®</sup>  
2 Trim: Jet Black ECC-10-2<sup>®</sup>  
3 Accent: Holly Berry<sup>®</sup> ECC-10-3<sup>®</sup>

**B**

1 Body: Daybreak Sun ECC-11-1<sup>®</sup>  
2 Trim: Daisy Field ECC-11-2<sup>®</sup>  
3 Accent: Whispering Oaks ECC-11-3<sup>®</sup>

**C**

1 Body: Hiking Trail ECC-51-1<sup>®</sup>  
2 Trim: Sand Castle ECC-51-2<sup>®</sup>  
3 Accent: Hidden Forest<sup>®</sup> ECC-51-3<sup>®</sup>

**D**

1 Body: Sonoran Sands ECC-43-1<sup>®</sup>  
2 Trim: Bridle Path ECC-43-2<sup>™</sup>  
3 Accent: Chaparral ECC-43-3<sup>®</sup>  
Feature: Natural Stone Wall



1 Body: Daybreak Sun ECC-11-1<sup>®</sup>  
2 Trim: Daisy Field ECC-11-2<sup>®</sup>  
3 Accent: Whispering Oaks ECC-11-3<sup>®</sup>

**E**

1 Body: Fair Winds ECC-41-1<sup>®</sup>  
2 Trim: Willow Wood ECC-41-2<sup>®</sup>  
3 Accent: Laurel Oak ECC-41-3<sup>®</sup>

**F**

1 Body: Floral Bluff ECC-16-1<sup>®</sup>  
2 Trim: Bright Moon ECC-16-2<sup>®</sup>  
3 Accent: Inlet Harbor ECC-16-3<sup>®</sup>  
Feature: Interlocking Gray Pavers



1 Body: Quail Ridge ECC-18-1<sup>®</sup>  
2 Trim: Pebbled Shore ECC-18-2<sup>®</sup>  
3 Accent: Blooming Wisteria ECC-18-3<sup>®</sup>

**G**

1 Body: Autumn Sage ECC-63-1<sup>®</sup>  
2 Trim: Aspen Snow ECC-63-2<sup>®</sup>  
3 Accent: Homeland ECC-63-3<sup>®</sup>  
Feature: Used Brick Wall

**H**

1 Body: Jungle Khaki ECC-64-1<sup>®</sup>  
2 Trim: Moonstruck ECC-64-2<sup>®</sup>  
3 Accent: Desert Night ECC-64-3<sup>®</sup>